

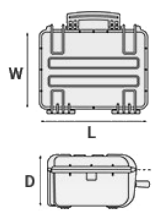
## Mod. 7726.B E

7726 – EXPLORER CASES, ULTRALIGHT COPOLYMER POLYPROPYLENE WATERPROOF CASE

100% Made in Italy tough cases ideal to transport equipment and instrumentation. Injection molded polypropylene copolymer resin material. Self oiling free running wheels. Ability to stack.



METRIC MM-KG-C°



### INTERNAL DIMENSIONS

L LENGTH	770 mm
W WIDTH	580 mm
D DEPTH	265 mm
LID	90 mm
BASE	175 mm

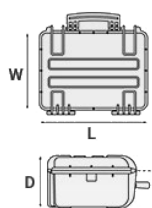
### EXTERNAL DIMENSIONS

L LENGTH	836 mm
W WIDTH	641 mm
D DEPTH	304 mm

### OTHER DATA

WEIGHT EMPTY	10.30 Kg
WEIGHT WITH FOAM	12.60 Kg
WEIGHT WITH CUSTOM FOAM	Kg
VOLUME	118 lt
BUOYANCY	70 Kg/max
OPERATING TEMPERATURE	°C min -33 / max +90

IMPERIAL IN-LBS-F°



### INTERNAL DIMENSIONS

L LENGTH	30 5/16 in
W WIDTH	22 13/16 in
D DEPTH	10 7/16 in
LID	3 9/16 in
BASE	6 7/8 in

### EXTERNAL DIMENSIONS

L LENGTH	32 15/16 in
W WIDTH	25 1/4 in
D DEPTH	11 15/16 in

### OTHER DATA

WEIGHT EMPTY	22.70 lbs
WEIGHT WITH FOAM	27.77 lbs
WEIGHT WITH CUSTOM FOAM	lbs
VOLUME	31.17 gal
BUOYANCY	154.32 lbs/max
OPERATING TEMPERATURE	°F min -27.4 / max +194

## FEATURES



### **AUTOMATIC VALVE**

Automatic pressure release valve.



### **SELF OILING FREE RUNNING WHEELS**



### **TWO MAN LIFT SIDE HANDLES**



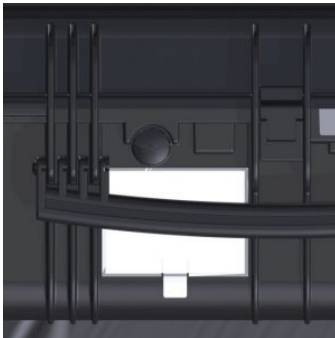
### **STAINLESS STEEL REINFORCED PADLOCKABLE POINTS**

4 stainless steel clip-covers on the two frontal outer padlock points, to grant a better resistance to abrasion.



### **ABILITY TO STACK**

The special design of the bottom and the lid feet, grants a perfect stackability.



### **SHIPPING LABEL HOLDER (mod. 7726)**

Polycarbonate removable label

## ACCESSORIES



### FOAM SET FOR CASE 7726

FOAM.7726

Layers of pre-cubed foam for the bottom and convoluted foam for the lid. The pre-cubed foam allows the user to tailor the insert to their own individual requirement. The convoluted foam in the lid helps to firmly keep the stored equipment when the case is closed. Available for 7726 model. Color: dark grey. [DOWNLOAD PDF](#)



### PROTECTIVE SLEEVE FOR PC 15"-15.6"

TOP ENVELOPE 15

Protective padded notebook sleeve. Protects the laptop from shocks and scratches.



### PROTECTIVE SLEEVE FOR PC 13"-13.3"

TOP ENVELOPE 13

Protective padded notebook sleeve. Protects the laptop from shocks and scratches.



### LID PANEL WITH ORGANIZED POUCHES

PANEXPL77

Practical and robust lid panel with pouches, ideal for small accessories and documents. Suitable for cases 7726 and 7745. Color: black.



FIXING  
KIT  
INCLUDED



OPTIONAL  
TOP COVERS  
AVAILABLE  
FOR LARGER  
MODELS

COPERCHI  
OPZIONALI  
PER I  
MODELLI  
PIU' GRANDI



### TOP COVER FOR DIV77 AND DIV7745

COV77

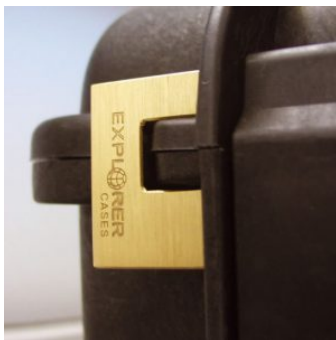
Top covers available for larger models: they can be easily fixed on the dividers by Velcro strips. Ideal to protect and keep items in place.



### PADDED DIVIDER FOR 7726-7745

DIV77

Padded dividers with internal adjustable partitions. Ideal to protect and transport any kind of sensitive equipment. Thanks to their modularity, they can be easily combined.



### PATENTED HEAVY DUTY BRASS PADLOCK WITH KEYS

EXPL PADLOCK

Designed to fit snug to the Explorer case mould so as not to swing out



### PATENTED COMBINATION PADLOCK

EXPL COMBILOCK

Designed to fit snug to the Explorer case mould so as not to swing out



### BLIND INSERT

KIT.EXPL.PLUGS

Kit includes 6 pcs. Whenever the slots are not going to be used for in-built applications, those can be closed by blind inserts that will give the case a better and finished interior look.



### TSA APPROVED PADLOCK WITH COMBINATION

EXPL TSA.DIGILOCK

The new TSA approved padlocks allow tsa® airport security agents to open the case without destroying the lock. TSA agents are trained to recognize the travel sentry certified logo and should not break the case lock.



### METAL BRACKET - KIT SUPP. EXPL

KIT SUPP.EXPL.

KIT SUPP. EXPL - Kit includes 6 pcs. All models (except for the 1908) are internally equipped with specific slots, to apply the optional metal or plastic brackets which provide either a panel's fixing points or a fix mechanical joint inside the case, to build more complete applications. This way the case becomes a real workstation, rather than just a carrying container. As the panel mounting brackets are mechanically fixed by screws, they can be removed when necessary. The dedicated screws allow the case to remain waterproof, and help the panels to be removed easily and quickly



### PLASTIC BRACKET

KIT SUPP.PLAST.

Kit includes 6 pcs. All models (except for the 1908) are internally equipped with specific slots, to apply the optional metal or plastic brackets which provide either a panel's fixing points or a fix mechanical joint inside the case, to build more complete applications. This way the case becomes a real workstation, rather than just a carrying container. As the panel mounting brackets are mechanically fixed by screws, they can be removed when necessary. The dedicated screws allow the case to remain waterproof, and help the panels to be removed easily and quickly



## SPARE PARTS



### Metal clips for mod.

**3005-4209-16-4412-19-4820-5140-5218-21-5325-26-5822-23-33-762-6-30-35-41-7726-45-7814-9413-33-10826-40-11413-13513-27-15416**

KIN.1214

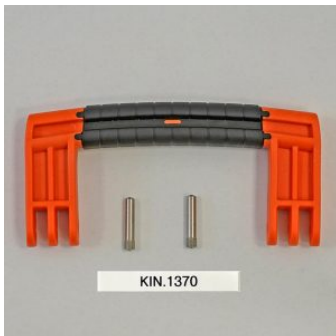
Includes: 4 metal reinforcements



### Polyurethane o-ring seal for models 7726 and 7745

KIN.1388

Includes: 1 o-ring



### Side handle for mod.

**5822-5823-5833-7626-7630-7635-7641-7726-7745-13513-13527**

KIN.1370

Includes: 1 orange handle 2 fixing pins



### Side handle for mod.

**5822-5823-5833-7626-7630-7635-7641-7726-7745-13513-13527**

KIN.1368

Includes: 1 military green handle 2 fixing pins

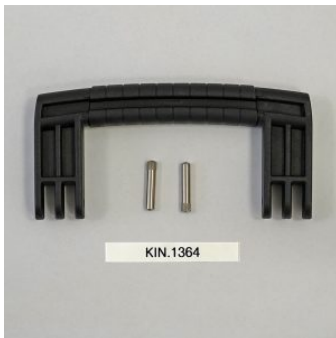


**Side handle for mod.**

**5822-5823-5833-7626-7630-7635-7641-7726-7745-13513-13527**

KIN.1366

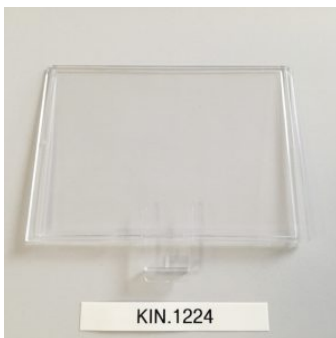
Includes: 1 desert tan handle 2 fixing pins



**Side handle for mod. 5131-7626HL-7635HL-7814HL**

KIN.1364

Includes: 1 black handle 2 fixing pins



**transparent polycarbonate shipping label holders for mod.**

**5218-5221-7626-7635-7726-7745-9433**

KIN.1224

Includes: 1 transparent label holder



**Transparent PC name tag for mod.**

**4209-4216-4412-4419-4820-5218-5221-5325-5326-5822-5823-5833-  
7626-7630-7635-7641-7726-7745-7814-9413-9433-10826-10840-114  
13-13513-13527-15416-MUB65**

KIN.0969

Includes: 1 transparent name tag holder



**Handle for mod.**

**7630-7726-7745-11413-13513-13527-15416-10826-10840-MUB78**

KIN.0425

Includes: 1 black handle 2 fixing pins



**Handle for mod.**

**7630-7726-7745-11413-13513-13527-15416-10826-10840-MUB78**

KIN.0881

Includes: 1 sand handle 2 fixing pins



**Easy-opening latch for models from 3818 up**

KIN.0446

Includes:

1 black latch

1 fixing pin



**Easy-opening latch for models from 3818 up**

KIN.0435

Includes:

1 military green latch

1 fixing pin



**Easy-opening latch for models from 3818 up**

KIN.0434

Includes:  
1 orange latch  
1 fixing pin



**Wheels for models 5326-5823-5833-7630-7641-7726-7745**

KIN.0522

Includes: 2 self-oiling wheels 4 metal washers 2 snap rings (Seeger) 2 fixing pins



**Side handle for models 7641-7726-7745**

KIN.0411

Includes: 1 orange handle 2 fixing pins



**Side handle for mod. 7641-7726-7745**

KIN.0422

Includes: 1 black handle 2 fixing pins



**Side handle for mod. 7641-7726-7745**

KIN.0421

Includes: 1 military green handle 2 fixing pins



**Handle for models**

**7630-7726-7745-11413-13513-13527-10826-10840-15416-MUB78**

KIN.0424

Includes: 1 military green handle 2 fixing pins



**Easy-opening latch for models from 3818 up**

KIN.0883

Includes:  
1 sand latch  
1 fixing pin



**Handle for models**

**7630-7726-7745-11413-13513-13527-10826-10840-15416-MUB78**

KIN.0423

Includes: 1 orange handle 2 fixing pins

