

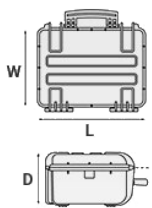
Mod. 5325.B E

COPOLYMER POLYPROPYLENE WATERPROOF CASE

IP67 waterproof, dustproof cases. Side handles and soft grip rubber handle. Lid can be set to slide-off. Stainless steel reinforced padlockable points.



METRIC MM-KG-C°



INTERNAL DIMENSIONS

L LENGTH	538 mm
W WIDTH	405 mm
D DEPTH	250 mm
LID	60 mm
BASE	190 mm

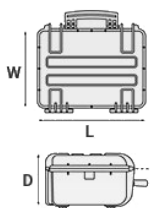
EXTERNAL DIMENSIONS

L LENGTH	607 mm
W WIDTH	475 mm
D DEPTH	275 mm

OTHER DATA

WEIGHT EMPTY	7 Kg
WEIGHT WITH FOAM	8.25 Kg
WEIGHT WITH CUSTOM FOAM	Kg
VOLUME	53 lt
BUOYANCY	37.20 Kg/max
OPERATING TEMPERATURE	°C min -33 / max +90

IMPERIAL IN-LBS-F°



INTERNAL DIMENSIONS

L LENGTH	21 3/16 in
W WIDTH	15 15/16 in
D DEPTH	9 13/16 in
LID	2 3/8 in
BASE	7 1/2 in

EXTERNAL DIMENSIONS

L LENGTH	23 7/8 in
W WIDTH	18 11/16 in
D DEPTH	10 13/16 in

OTHER DATA

WEIGHT EMPTY	15.43 lbs
WEIGHT WITH FOAM	18.18 lbs
WEIGHT WITH CUSTOM FOAM	lbs
VOLUME	14 gal
BUOYANCY	82.01 lbs/max
OPERATING TEMPERATURE	°F min -27.4 / max +194

FEATURES



CORROSION PROOF METAL HINGES WITH LID STAY FEATURES



INTERNAL SLOTS

Internal slots for optional panel mounting brackets or panel mounting rings



JAM FREE LATCHES WITH EASY-OPENING MECHANISM

(from model 3818 on)



SEALING O-RING

(Art. NEOSEAL + nr. art.)



MANUAL PRESSURE RELEASE VALVE

The internal stop ring prevents valve from being completely extracted (Art. PURGEVALVE.B)



PVC WATERPROOF I. D. REMOVABLE LABEL

(Art. LABELCOVER + nr. art.)



LID CAN BE SET TO SLIDE-OFF

By releasing the back screw, lid becomes set to slide-off when opened at 70°



SOFT GRIP RUBBER HANDLE

Load tested handle, reinforced with corrosion proof steel pins

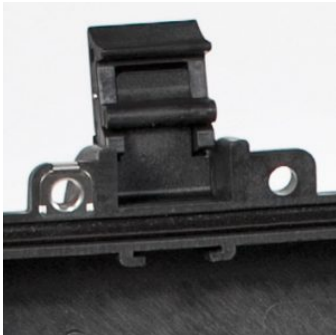


TWO MAN LIFT SIDE HANDLES



STAINLESS STEEL REINFORCED PADLOCKABLE POINTS WITH CLIPS

4 stainless steel clip-covers on the two frontal outer padlock points, to grant a better resistance to abrasion.



FIXING POINTS (5325-5326)

Additional fixing points on the lid.

ACCESSORIES



PROTECTIVE SLEEVE FOR PC 15"-15.6"

TOP ENVELOPE 15

Protective padded notebook sleeve. Protects the laptop from shocks and scratches.



PROTECTIVE SLEEVE FOR PC 13"-13.3"

TOP ENVELOPE 13

Protective padded notebook sleeve. Protects the laptop from shocks and scratches.



TOP COVER FOR DIV53

COV53

Top covers available for larger models: they can be easily fixed on the dividers by Velcro strips. Ideal to protect and keep items in place.

OPZIONALI
TOP COVERS
AVAILABLE
FOR LARGER
MODELS

COPERCHI
OPZIONALI
PER I
MODELLI
PIU' GRANDI



PADDED DIVIDER FOR 5325-5326

DIV53

Padded dividers with internal adjustable partitions. Ideal to protect and transport any kind of sensitive equipment. Thanks to their modularity, they can be easily combined.



PADDED BAG WITH ADJUSTABLE DIVIDERS

BAG-V

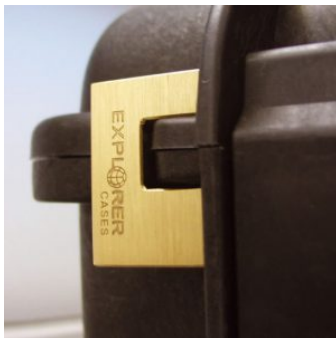
Highly durable padded bag with rubber coated handle and waterproof zipper with lockable Velcro pull zipper. Practical external front pouch for documents, removable shoulder strap and rubber feet on the bottom to grant better grip. Internal adjustable padded dividers for flexible configuration. Ideal to protect sensitive equipment (ie electronic, photographic, broadcasting, medical etc.). Suitable for cases 5325-5326. Color: black/red.



LID PANEL WITH ORGANIZED POUCHES

PANEXPL53

Practical and robust lid panel with pouches, ideal for small accessories and documents. Suitable for cases 5325 and 5326. Color: black.



PATENTED HEAVY DUTY BRASS PADLOCK WITH KEYS

EXPL PADLOCK

Designed to fit snug to the Explorer case mould so as not to swing out



PATENTED COMBINATION PADLOCK

EXPL COMBILOCK

Designed to fit snug to the Explorer case mould so as not to swing out



BLIND INSERT

KIT.EXPL.PLUGS

Kit includes 6 pcs. Whenever the slots are not going to be used for in-built applications, those can be closed by blind inserts that will give the case a better and finished interior look.



TSA APPROVED PADLOCK WITH COMBINATION

EXPL TSA.DIGILOCK

The new TSA approved padlocks allow tsa® airport security agents to open the case without destroying the lock. TSA agents are trained to recognize the travel sentry certified logo and should not break the case lock.



METAL BRACKET - KIT SUPP. EXPL

KIT SUPP.EXPL.

KIT SUPP. EXPL - Kit includes 6 pcs. All models (except for the 1908) are internally equipped with specific slots, to apply the optional metal or plastic brackets which provide either a panel's fixing points or a fix mechanical joint inside the case, to build more complete applications. This way the case becomes a real workstation, rather than just a carrying container. As the panel mounting brackets are mechanically fixed by screws, they can be removed when necessary. The dedicated screws allow the case to remain waterproof, and help the panels to be removed easily and quickly



PLASTIC BRACKET

KIT SUPP.PLAST.

Kit includes 6 pcs. All models (except for the 1908) are internally equipped with specific slots, to apply the optional metal or plastic brackets which provide either a panel's fixing points or a fix mechanical joint inside the case, to build more complete applications. This way the case becomes a real workstation, rather than just a carrying container. As the panel mounting brackets are mechanically fixed by screws, they can be removed when necessary. The dedicated screws allow the case to remain waterproof, and help the panels to be removed easily and quickly



FOAM SET FOR CASE 5325 AND 5326

FOAM.5325

Layers of pre cubed foam for the bottom and convoluted foam for the lid. The pre-cubed foam allows the user to tailor the insert to their own individual requirement. The convoluted foam in the lid helps to firmly keep the stored equipment when the case is closed. Available for models 5325 and 5326. Color: dark grey. [DOWNLOAD PDF](#)



CONVOLUTED FOAM SET FOR CASE 5325 AND 5326

LIDFOAM.53

(includes 2 pcs.)

SPARE PARTS



Metal clips for mod.

**3005-4209-16-4412-19-4820-5140-5218-21-5325-26-5822-23-33-762
6-30-35-41-7726-45-7814-9413-33-10826-40-11413-13513-27-15416**

KIN.1214

Includes: 4 metal reinforcements



KIN.0969

Transparent PC name tag for mod.

**4209-4216-4412-4419-4820-5218-5221-5325-5326-5822-5823-5833-
7626-7630-7635-7641-7726-7745-7814-9413-9433-10826-10840-114
13-13513-13527-15416-MUB65**

KIN.0969

Includes: 1 transparent name tag holder



KIN.0426

Side handle for models

5325-5326-5822-5823-5833-7630-7814-13513-13527-15416

KIN.0426

Includes: 1 orange handle 2 fixing pins



KIN.0880
PIC MAN LAT BARBA 90259537100

Side handle for models

5325-5326-5822-5823-5833-7630-7814-13513-13527-15416

KIN.0880

Includes: 1 sand handle 2 fixing pins



Side handle for models

5325-5326-5822-5823-5833-7630-7814-13513-13527-15416

KIN.0412

Includes: 1 black handle 2 fixing pins



Rubber coated handle for models 4820-5325-5326-5822-5823-5833

KIN.0540

Includes: 1 orange handle 2 fixing pins



Rubber coated handle for models 4820-5325-5326-5822-5823-5833

KIN.0542

Includes: 1 black handle 2 fixing pins



Polyurethane o-ring seal for models 5325-5326

KIN.0925

Includes: 1 o-ring



Extractable handle + wheels for models 5325-5326

KIN.0930

Includes: 1 black extractable handle 1 black protective cover 2 self-oiling wheels 1 metal spring 1 lock/unlock lever 1 small cover cap 4 fixing pins 2 supporting feet for wheels 4 supporting feet for the bottom 4 snap rings (Seeger) 12 fixing screws



KIN.0446

Easy-opening latch for models from 3818 up

KIN.0446

Includes:
1 black latch
1 fixing pin



KIN.0435

Easy-opening latch for models from 3818 up

KIN.0435

Includes:
1 military green latch
1 fixing pin



KIN.0434

Easy-opening latch for models from 3818 up

KIN.0434

Includes:
1 orange latch
1 fixing pin



Rubber coated handle for models 4820-5325-5326-5822-5823-5833

KIN.0541

Includes: 1 military green handle 2 fixing pins



Side handle for models

5325-5326-5822-5823-5833-7630-7814-13513-13527-15416

KIN.0448

Includes: 1 military green handle 2 fixing pins



Easy-opening latch for models from 3818 up

KIN.0883

Includes:
1 sand latch
1 fixing pin



Manual pressure release valve for models from 2712 up (except mod. 3005)

KIN.0495

Includes: 1 black purge valve (+ o-ring + pin) 1 threaded bush 1 snap ring (Seeger)

